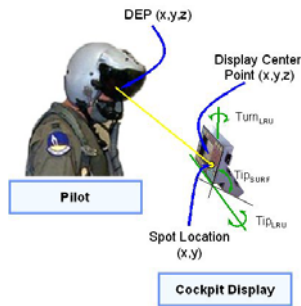


## Critical Test Capability for High Performance Displays

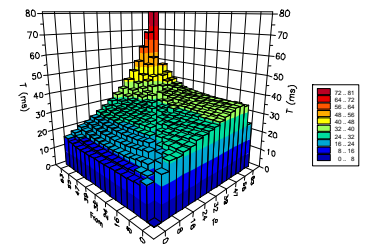
### Design Eye Point (DEP) Geometry Simplified

- Includes a powerful geometric model of DEP space
- Simplifies complex set-ups
- Handles fixture offsets
- Analyzes performance throughout DEP box
- Saves hours of time in calculations and set-up



### Gray Level Response Time

- Includes fully programmable software tools
- Uses Westar TRD-100A and T-Drive™ Universal Drive
- Measure  $\Delta$ GL down to 1 GL
- Excel based data and graph
- Typical test time < 5 minutes



### Temperature Testing

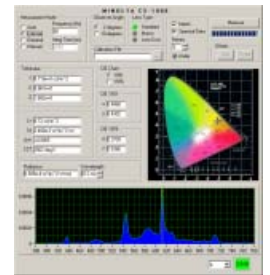
- Fiber optically coupled instruments remain outside chamber
- XYZ stage and gimbaled probe provide uniformity and viewing angle measurements
- Fully programmable temperature profiles
- Standard range: 0° ~ 70°C, extended ranges available



### Optical Instrument Support

Our powerful software interfaces preserve your existing instrument investment:

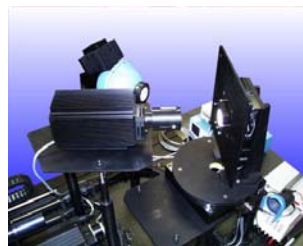
- IS-320 / CAS-140B
- OL-750-NVG / OL-770-NVG
- BM-5As / BM-7A / SR-3A, ULx
- PR-880 / PR-650 / PR-7x5
- PM-1400 / PM-1600
- NVG-4040



CS-1000 Interface

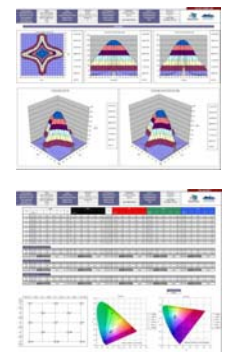
### MIL-L-85762A Reflection Testing

- Fully integrated Hoffman Engineering lighting apparatus
- Measures diffuse and specular reflection coefficients
- Includes reflection standards and lamp mounting hardware
- Easy set-up saves time



### Complete Optical Characterization

- Luminance, CR, and Color Uniformity
- Luminance & Color vs. Viewing Angle
- R/G/B/W Gamma
- Chromaticity and Color Gamut
- Response Time and Flicker
- Reflection and NVIS Testing



## Measurement Systems for High Performance Displays

### Turn-Key Display Measurement Systems

Westar FPM Systems are the industry standard platform for complete optical characterization of airborne and ground vehicle displays. Our systems support most NVIS-capable spectroradiometers, as well as other industry standard light measurement devices, thus preserving your existing instrument investments.

We have designed and fielded dozens of FPM System configurations optimized for nearly every display type and program. Each system is built upon our common Viewpoint™ software and architecture, giving you the greatest level of hardware and software integration available. Here are just a few of our most popular systems:



FPM-500



FPM-510



FPM-520



NEW FPM-530-FO

## Measurement Services for High Performance Displays

### When does outsourcing display measurements make sense?

- Panel supplier quality – When you need to be sure your suppliers can meet your stringent specifications.
- Design verification – When your R&D team just produced the first article of a new display...is it ready for production?
- Pre- and post-environmental testing – When tough applications require tough displays, you need to know if it can take the abuse of harsh environmental testing.
- Small Programs / Start Ups – When the budget is tight, outsourcing display measurements gives you accurate, defensible results quickly without the capital costs, calibration hassles, and learning curve.

### Some of the services we offer:

- Pre-test Consultation – Before you spend a dime, call us to discuss your requirements – we'll advise you how best to proceed, what's important, and how we can help.
- Display Test Integration – Panel, DHA sub-assembly, or finished LRU – we can drive it right and get it ready for test with fixturing and cabling.
- VESA/ICDM FPDM Standard Testing – Suite of basic measurements, reflection testing, response time & flicker – we've done it all.
- TC0'99/03/05 Testing – Viewing angle dependence, front frame gloss, and more!
- MIL-L and Custom Testing – Special tests and modifications to standard procedures are not a problem.

### Need more information?

Call our engineering hotline at **636-300-5102** to discuss your display test program and needs.