

EZblend™ Video Combiner



Resolutions up to UXGA

Alpha blend, RGB Key, HSV Key, Windowing, Split Screen, PIP, programmable borders, color substitution and more

EZsetup utility supports user-defined:

- ✓ input and output timing and resolutions
- ✓ input areas of interest
- ✓ blending schemes

Available 1U rack enclosure

EZblend 121 One channel (2 inputs and 1 output)

EZblend 221 Two independent channels

I/O: Analog RGB (interlaced or non-interlaced), TMDS standard

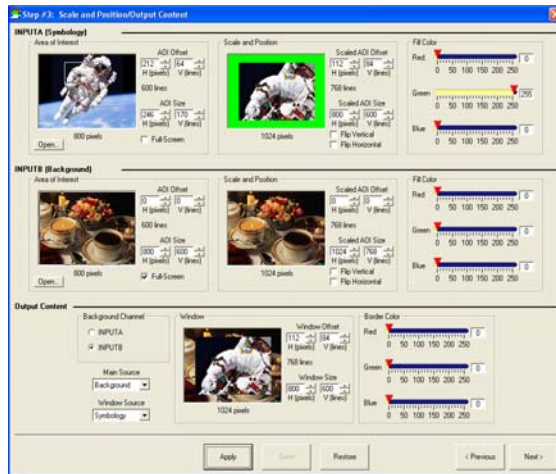
Setup the EZblend in five (5) steps using the EZsetup utility.



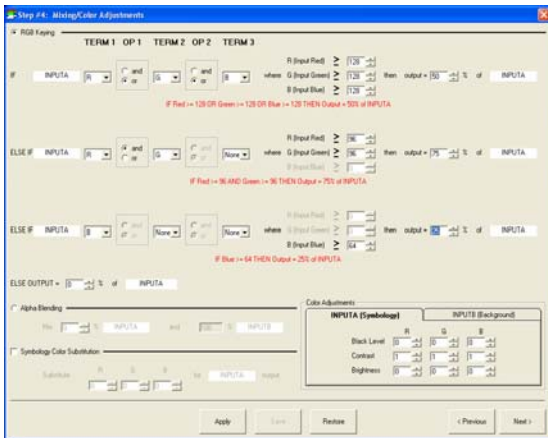
Step #1 Define input timing



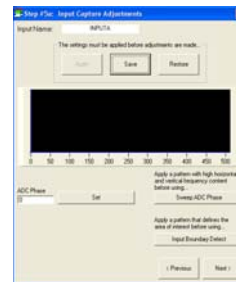
Step #2 Define output timing



#3 Define windowing / scaling / border colors



#4 Define Mixing and Color Adjust



#5 Input Capture Adjust

EZblend™ Specifications

Input Specifications (Subject to change without notice)

Video Type	Standard: Analog RGB (0.7 Volt levels), Interlaced or non-interlaced, TMDS Optional: NTSC/PAL composite, S-Video via NTSC/PAL option
Pixel Rate	Up to 165 MHz
Clocks per Line	Up to 4096
Lines per frame	Up to 2048
Sync Type	HV, Composite Sync, or Sync-on-Green
Phase Adjustments	Sample clock can be adjusted to ensure center sampling
Connectors	DVI-I (DVI-A to HD-15 adapter included)

Output Specifications

Video Type	Standard: Analog RGB (0.7 Volt levels), Interlaced or non-interlaced, TMDS
Pixel Rate	Up to 165 MHz
Clocks per Line	Up to 4096
Lines per frame	Up to 2048
Sync Type	HV, Composite Sync, or Sync-on-Green
Connectors	DVI-I (DVI-A to HD-15 adapter included)

Electro Mechanical

Input Power	IEC Connector, 100-240 VAC, 47-63 Hz, less than 60 Watts
Control	RS-232
Size (221 and 121-1U)	19"W x 10.25"D x 1.75"H (1U)
Size (121-BT)	10.5W x 10.0D x 2.25H
Weight	Less than 5 lbs.

Environmental

Temperature	Operating 0°C to +50°C; Storage -20°C to +70°C
Relative Humidity	0 to +95%, non-condensing

Warranty

One year

Functional

Blending capabilities	Alpha blend, RGB Key, HSV key, Windowing, Split Screen, PIP, Stereo Output, more
Specialty Features	Programmable border colors and single color substitution for overlaid video
Color processing depth	8 bits per color
Re-sizing limits	50% horizontal shrink, 50% vertical shrink

Included documentation and software

Users Guide, Command Line Manual, and EZsetup utility software and manual

Ordering Information:

The EZblend configurations are specified via a part number and possibly dash numbers. A dash number is required to specify the EZblend 121 enclosure. A dash number also specifies the location of optional NTSC/PAL input mezzanines. Your quote will reflect the ordering part number. Some typical part numbers are shown below:

EZblend 221	Standard EZblend 221
EZblend 221-NTSC/PAL(1A)	EZblend 221 with NTSC/PAL mezzanine on input 1A
EZblend 221-NTSC/PAL(1A, 2A)	EZblend 221 with NTSC/PAL mezzanine on inputs 1A and 2A
EZblend 121-BT	EZblend 121 in benchtop enclosure
EZblend 121-1U	EZblend 121 in 1U rackmount enclosure
EZblend 121-1U-NTSC/PAL(1A,1B)	EZblend 121 in 1U rackmount enclosure NTSC/PAL mezzanine on inputs 1A and 1B

Applications include:

- √ Overlaying symbology on background video for simulated cockpit displays.
- √ Combining dual projector video for remote monitor viewing.
- √ 3-D stereoscopic outputs
- √ Small area blending of background and symbology for HUD simulation.
- √ Security and specialty applications with custom windowing or blending requirements.

To find out if EZblend™ is right for your application, please contact our application specialists at Extension 5164.